

Kitchen & Bath Drawing Corrections/Updates

NKBA Partner Advertisement

Last Update: 6/9/2011

The following correction applies to the 2006 & 2008 printings.

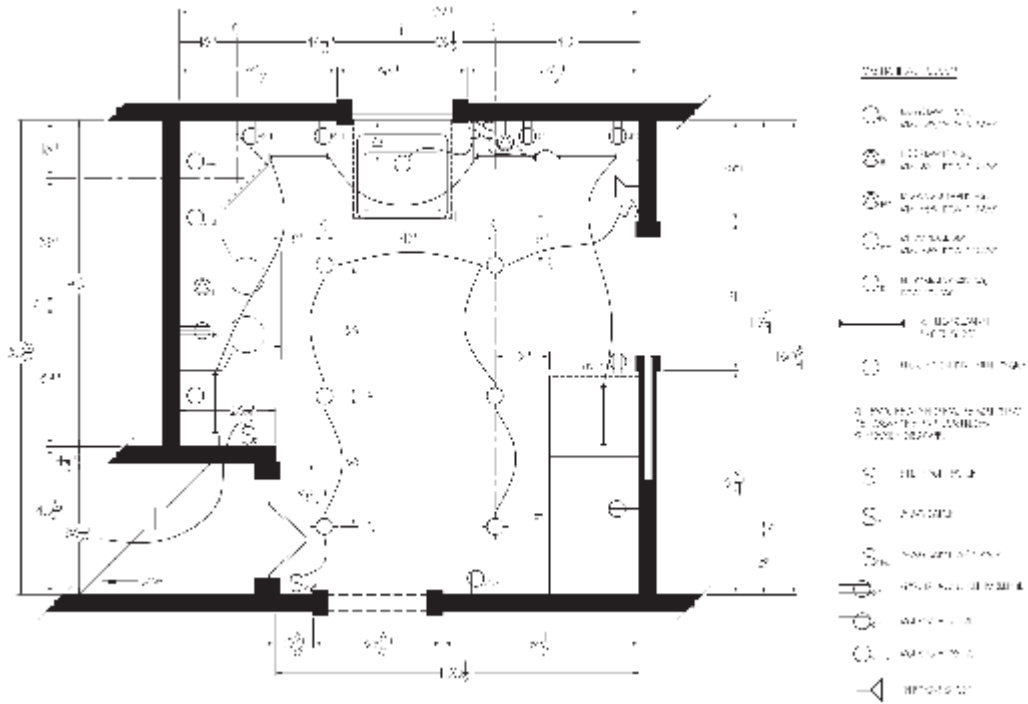
Page 79 - Figure 3.66 Lighting symbols

The lighting symbol labeled **Ceiling Mounted Wall-Washer Fixture** should be corrected to read: **Recessed Wall-Washer Fixture**

The following changes apply to the 2006 printing and have been incorporated into the 2008 reprint.

- **Page 7** - Figure 1.7
- **Page 96** - Figure 4.9
- **Page 144** - Figure 8.4
- **Appendix A3** - Kitchen Mechanical Plan

Replace drawing with the following, which is corrected to show that the lights are centerlined:



[Click here for a printable version of this drawing.](#)

Page 11 - Figure 1.11 - Replace page with [this document](#), which has correct elevation symbols in the drawing.

Page 78 - Figure 3.65B - Replace page with [this document](#), which shows a correct Junction Box symbol.

Page 79 - Figure 3.66 - Replace page with [this document](#), which shows the correct Surface Mounted (Horizontal) Fluorescent description.

Page 81 - Figure 3.68 - Replace page with [this document](#), which includes additional miscellaneous symbols.

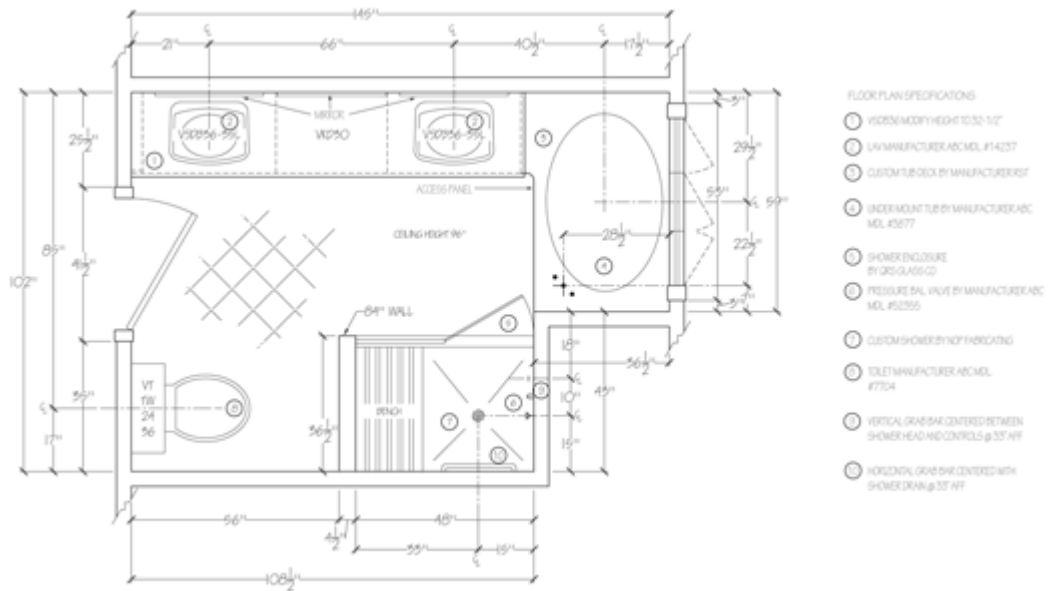
Page 95 - Figure 4.8 - Replace page with [this document](#), which has correct elevation symbols in the drawing.

Page 114 - Figure 4.26, caption - Correct to read (Courtesy of Maughan Design-Portland, Oregon. Rendering by Tamara Johnson.)

Page 139 - Paragraph 2, last sentence - Correct to read: Copyright protection exists from the moment the work is created in its final form and will endure 70 years after your death.

- **Page 160** - Figure 8.9
- **Appendix A4** - Bath Floor Plan

Replace drawing with the following, indicating additions to the Floor Plan Specifications and labeling for access panel and mirrors:

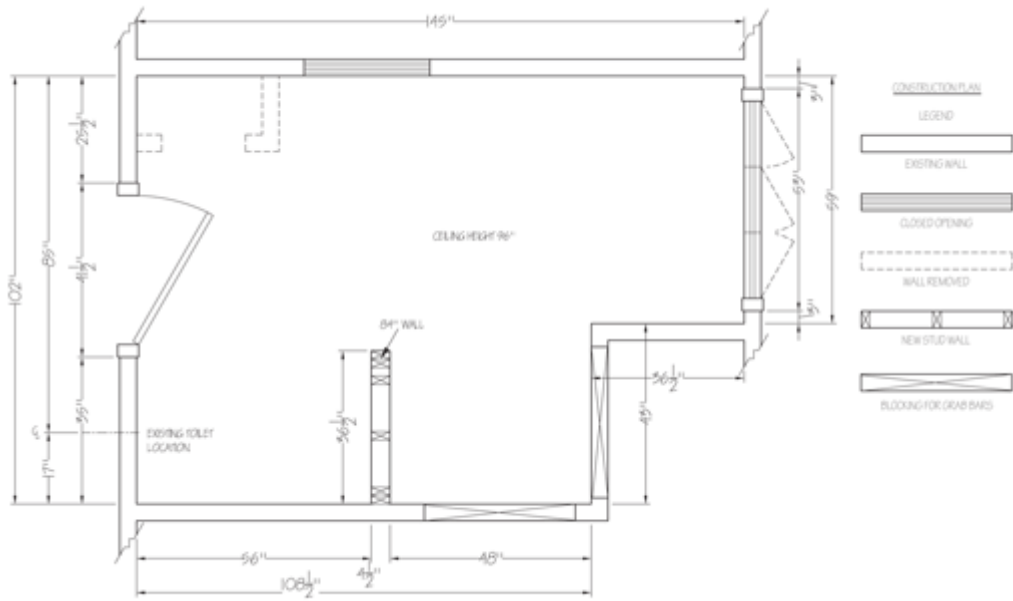


[Click here for a printable version of this drawing.](#)

Page 142 - Figure 8.2 - Replace page with [this document](#), which has correct elevation symbols in the drawing.

- **Page 161**
- **Appendix A5**

Replace drawing with the following, indicating blocking for grab bars:



[Click here for a printable version of this drawing.](#)

Page 180 - Windows and Doors Section, Special Window and Door Notes - Add: Designer to verify tempered glass window.

Appendix A1 - Kitchen Floor Plan - Replace page with this [this document](#), which has correct elevation symbols in the drawing.